

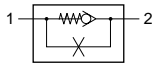
# Logic Valves & Flow Control

## Pneumatic One-Way Flow Restrictor - Fixed Orifice

### Technical information

<b>Pressure range:</b>	0.5-8 bar
<b>Opening pressure:</b>	≥ 0.5 bar
<b>Temperature range:</b>	-10°C...+70°C
<b>Materials:</b>	Brass body.
<b>Seals:</b>	Perbunan
<b>Flow rate:</b>	Depends on version ordered, see below.
<b>Operating medium:</b>	5 micron filtered, lubricated or non-lubricated compressed air.



Symbol	Description	Threads	Order code
	One way flow restrictor with fixed orifice	M5	47.251.XX

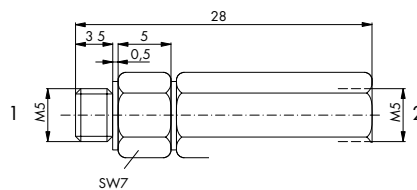
### Dimensional drawings

Approx. flow rates at 7 bar:	Ø0.10	0.34 l/min	47.251.10
	Ø0.16	1.42 l/min	47.251.16
	Ø0.25	3.40 l/min	47.251.25
	Ø0.40	8.50 l/min	47.251.40
	Ø0.60	19.80 l/min	47.251.60

The one-way restrictor with a fixed orifice is used where a reduction to low and constant air flow value is required, for example time control systems.

Available with fixed apertures - Ø: 0.10/0.16/ 0.25/0.40 and 0.60mm.

The respective orifice diameter is inserted in position **XX**  
 Example aperture 0.25 = Order Code: 47.251.25



**Impulse Automation Limited**  
**United Kingdom**  
**Company Registration 665193**