

Air Pilot Operated Pneumatic Valves

3/2 Way Single Pilot Control Valve G1/8 & G1/4 Ports

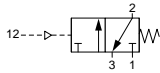
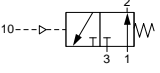
Technical information

Pressure range: 0-10 bar
Control pressure: 3.5-10 bar (port 14 ≥ port 1 pressure)
Temperature range: -15°C...+50°C
Housing: Glass fibre reinforced PPA
Seals: NBR
Lubricant: Not required
Operating medium: 5 micron filtered, lubricated or non-lubricated compressed air.

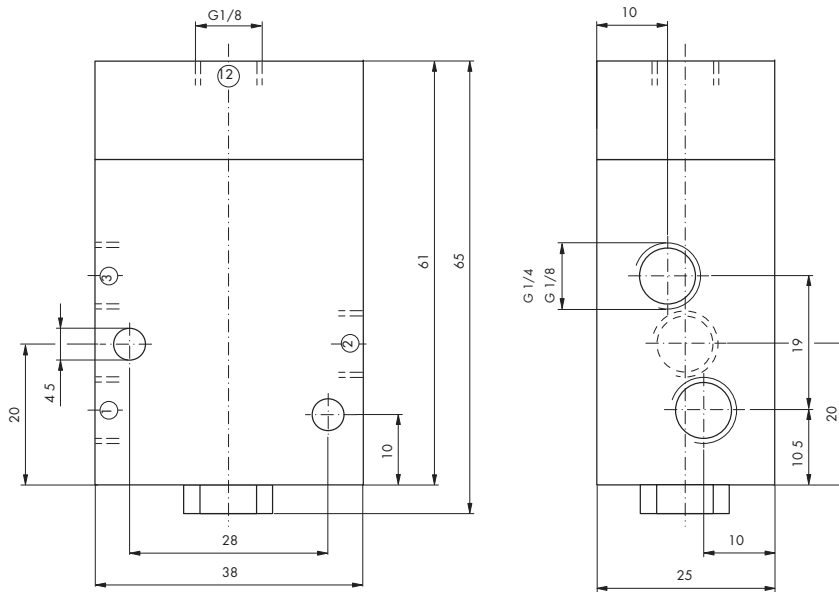


Other information

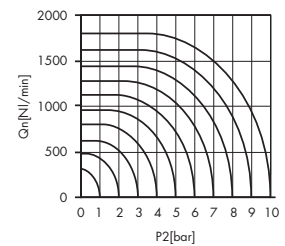
For NPT ports use prefix code "75" for example 75.XXX.XX.XX
 For vacuum please use code 76.2X6.71.21 **these versions only

Symbol	Description	Type	Orifice	Pilot Ports	Ports	Order code
	3/2 way normally closed spring return **	Poppet	6mm	G1/8	G1/8	76.126.71.21
	3/2 way normally closed spring return **	Poppet	8mm	G1/8	G1/4	76.146.71.21
	3/2 way normally open spring return	Poppet	6mm	G1/8	G1/8	76.126.71.31
	3/2 way normally open spring return	Poppet	8mm	G1/8	G1/4	76.146.71.31

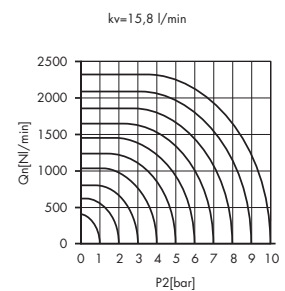
Dimensional drawings



Flow rate orifice 6mm poppet type
 $k_v=12,3$ l/min



Flow rate orifice 8mm poppet type
 $k_v=15,8$ l/min



Impulse Automation Limited
United Kingdom
Company Registration 665193