

# Air Pilot Operated Pneumatic Valves


## 3/2 Way Single Pilot Control Valve G1/2 Ports

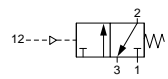
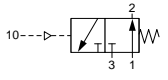
### Technical information

**Pressure range:** 0-10 bar  
**Control pressure:** 2.5-10 bar  
**Temperature range:** -15°C...+50°C  
**Housing:** Lacquered aluminium alloy  
**Seals:** NBR  
**Lubricant:** Not required  
**Operating medium:** 5 micron filtered, lubricated or non-lubricated compressed air

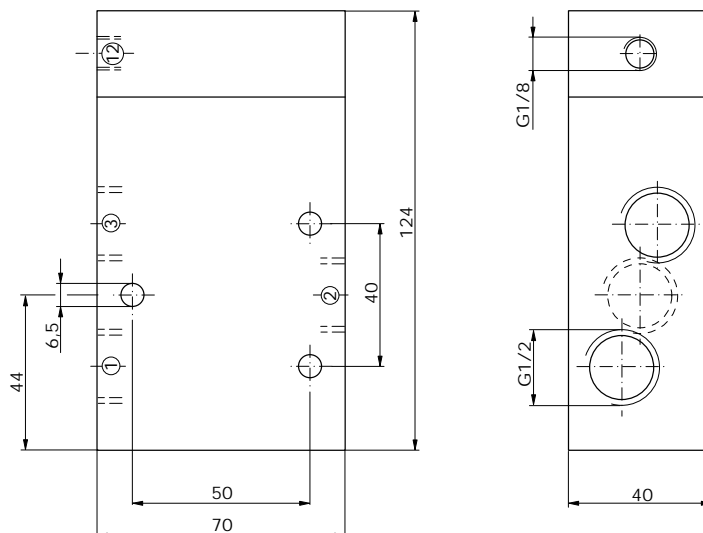


### Other information

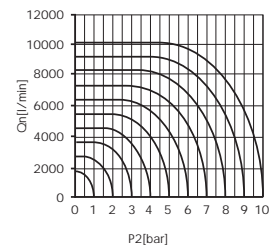
 For ATEX certification use suffix code "EX" for example 76.XXX.XX.XX.EX  
 For NPT ports use prefix code "75" for example 75.XXX.XX.XX  
 For vacuum please use code 76.266.81.21 \*\*this version only

Symbol	Description	Type	Orifice	Pilot Ports	Ports	Order code
	3/2 way normally closed spring return **	Poppet	15mm	G1/8	G1/2	<b>76.066.81.21</b>
	3/2 way normally open spring return	Poppet	15mm	G1/8	G1/2	<b>76.066.81.31</b>

### Dimensional drawings



Flow rate orifice 15mm poppet type  
 kv=68,80 l/min



**Impulse Automation Limited**  
**United Kingdom**  
**Company Registration 665193**