

Air Pilot Operated Pneumatic Valves

5/2 Way Single Pilot Control Valve G1/4 Ports

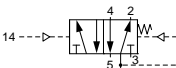
Technical information

Pressure range:	2.5-10 bar
Control pressure:	2.5-10 bar (port 14 ≥ port 1 pressure)
Temperature range:	-15°C...+50°C
Housing:	Glass fibre reinforced PPA
Seals:	NBR
Lubricant:	Not required
Operating medium:	5 micron filtered, lubricated or non-lubricated compressed air

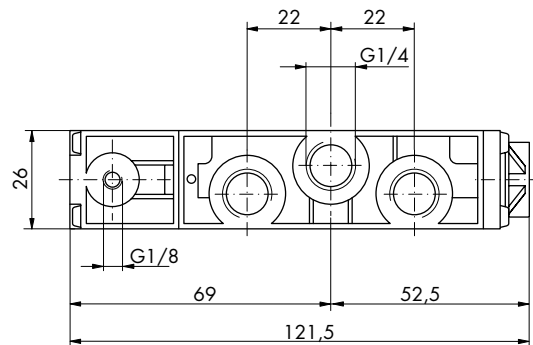


Other information

For NPT ports use prefix code "75" for example 75.XXX.XX.XX

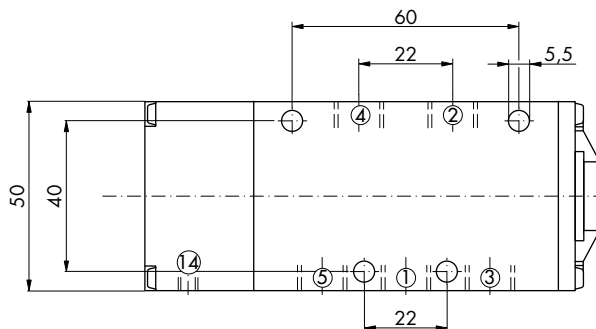
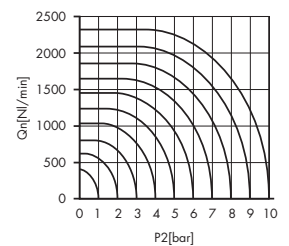
Symbol	Description	Type	Orifice	Pilot Ports	Ports	Order code
	5/2 way spring return	Poppet	8mm	G1/8	G1/4	76.147.81.41
	5/2 way spring return	Spool	8mm	G1/8	G1/4	76.143.81.41

Dimensional drawings



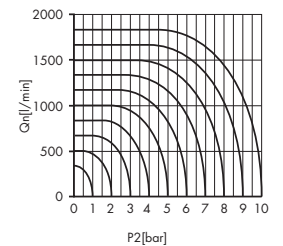
Flow rate orifice 8mm poppet type

kv=15,8 l/min



Flow rate orifice 8mm spool type

kv=12,40 l/min



Impulse Automation Limited
United Kingdom
Company Registration 665193