

Air Pilot Operated Pneumatic Valves


5/2 Way Single Pilot Control Valve G1/2 Ports

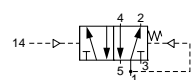
Technical information

Pressure range: 2.5-10 bar
Control pressure: 2.5-10 bar (port 14 ≥ port 1 pressure)
Temperature range: -15°C...+50°C
Housing: Lacquered aluminium alloy
Seals: NBR
Lubricant: Not required
Operating medium: 5 micron filtered, lubricated or non-lubricated compressed air

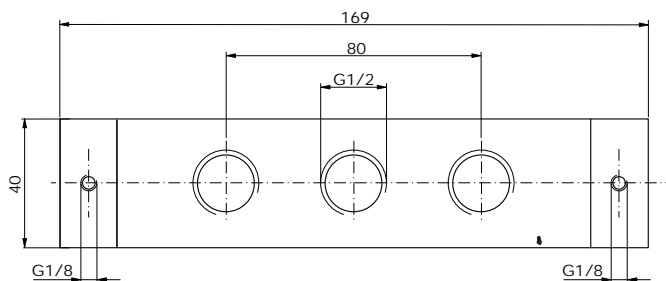
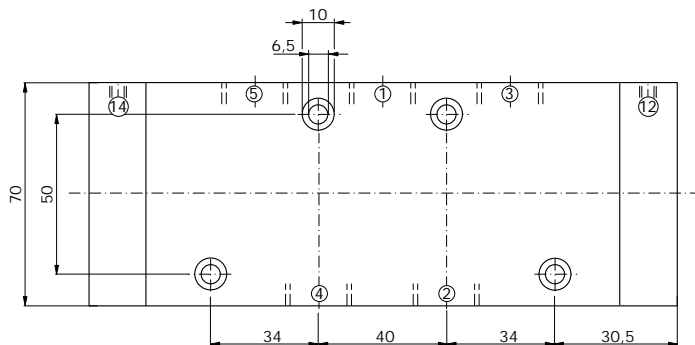


Other information

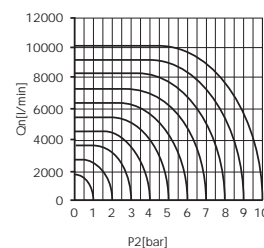
 For ATEX certification use suffix code "EX" for example 76.XXX.XX.XX.EX
 For NPT ports use prefix code "75" for example 75.XXX.XX.XX

Symbol	Description	Type	Orifice	Pilot Ports	Ports	Order code
	5/2 way spring return	Poppet	15mm	G1/8	G1/2	76.067.81.41

Dimensional drawings



Flow rate orifice 15mm poppet type
 kv=68,80 l/min



Impulse Automation Limited
United Kingdom
Company Registration 665193