

# Solenoid Operated Pneumatic Valves

## 3/2 Way Single Solenoid Control Valve G1/8 & G1/4 Ports

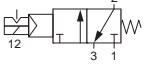
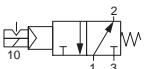
### Technical information

**Pressure range:** 2.5-10 bar  
**Temperature range:** -15°C...+50°C  
**Housing:** Glass fibre reinforced PPA  
**Seals:** NBR  
**Lubricant:** Not required  
**Earthing contact:** Part of the standard device.  
**Operating medium:** 5 micron filtered, lubricated or non-lubricated compressed air.

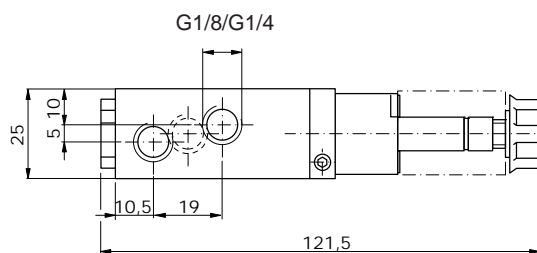
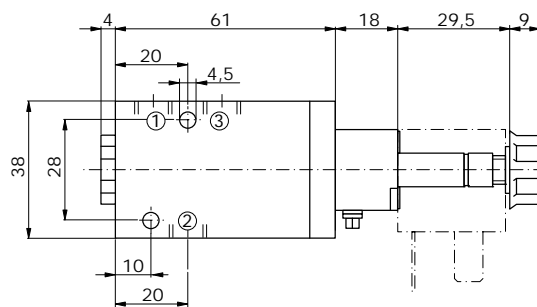


### Other information

For NPT ports use prefix code "75" for example 75.XXX.XX.XX  
 For vacuum please use code 76.7XX.XX.XX  
 Order coils & connecting plugs separately, see data sheet M1002.

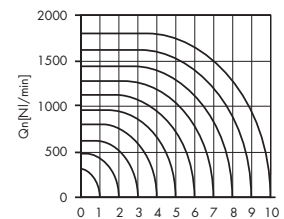
Symbol	Description	Type	Orifice	Ports	Order code
	3/2 way normally closed spring return	Poppet	6mm	G1/8	<b>76.126.01.00</b>
	3/2 way normally closed spring return	Poppet	8mm	G1/4	<b>76.146.01.00</b>
	3/2 way normally open spring return	Poppet	6mm	G1/8	<b>76.126.11.00</b>
	3/2 way normally open spring return	Poppet	8mm	G1/4	<b>76.146.11.00</b>

### Dimensional drawings



Flow rate orifice 6mm poppet type

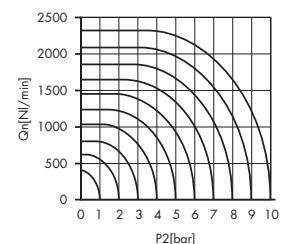
kv=12,3 l/min



P2[bar]

Flow rate orifice 8mm poppet type

kv=15,8 l/min



P2[bar]

**Impulse Automation Limited**  
**United Kingdom**  
**Company Registration 665193**