

Solenoid Operated Pneumatic Valves

3/2 Way Single Solenoid Control Valve G1/2 Ports

Technical information

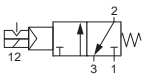
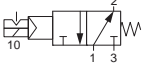
Pressure range: 2.5-10 bar
Temperature range: -15°C...+50°C
Housing: Lacquered aluminium alloy
Seals: NBR
Lubricant: Not required
Earthing contact: Part of the standard device.
Operating medium: 5 micron filtered, lubricated or non-lubricated compressed air



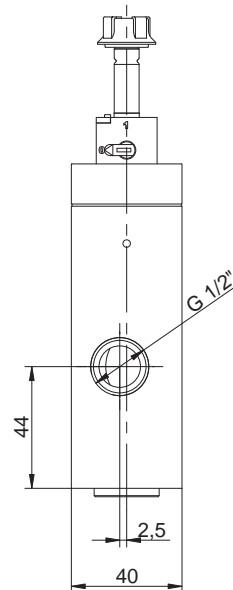
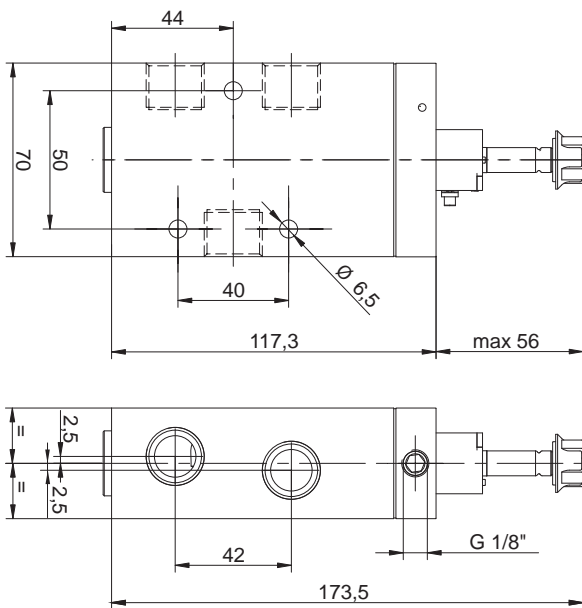
Other information



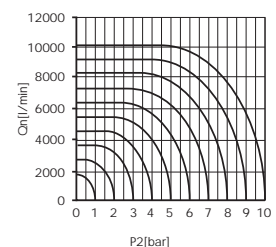
For ATEX certification use suffix code "EX" for example 76.XXX.XX.XX.EX
 For NPT ports use prefix code "75" for example 75.XXX.XX.XX
 For vacuum please use code 76.2XX.XX.XX **this version only.
 Order coils & connecting plugs separately, see data sheet M1002.

Symbol	Description	Type	Orifice	Ports	Order code
	3/2 way normally closed spring return**	Poppet	15mm	G1/2	76.066.01.00
	3/2 way normally open spring return	Poppet	15mm	G1/2	76.066.11.00

Dimensional drawings



Flow rate orifice 15mm poppet type
 kv=68,80 l/min



Impulse Automation Limited
United Kingdom
Company Registration 665193