

Solenoid Operated Pneumatic Valves


5/2 Way Single & Double Solenoid Control Valve G1/2 Ports

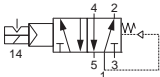
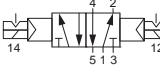
Technical information

Pressure range:	2.5-10 bar
Temperature range:	-15°C...+50°C
Housing:	Lacquered aluminium alloy
Seals:	NBR
Lubricant:	Not required
Earthing contact:	Part of the standard device.
Operating medium:	5 micron filtered, lubricated or non-lubricated compressed air

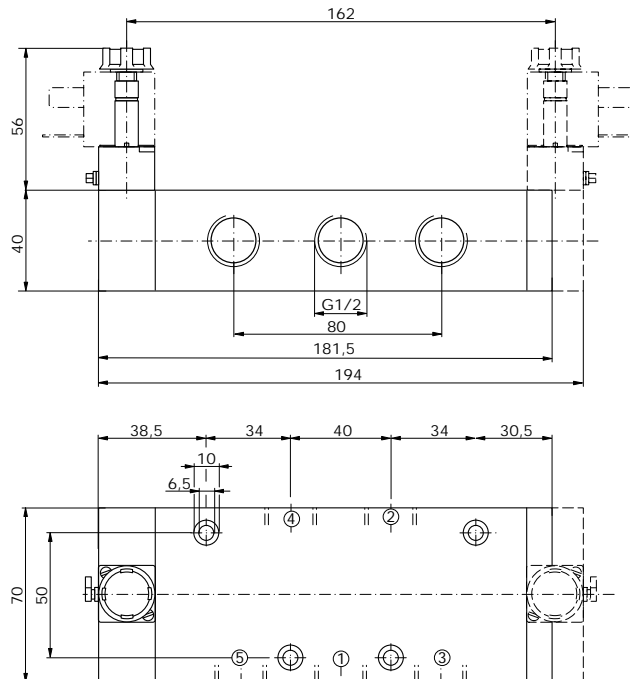


Other information

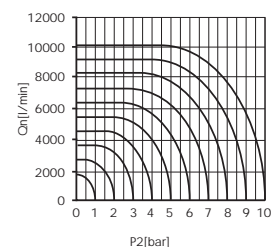
 For ATEX certification use suffix code "EX" for example 76.XXX.XX.XX.EX
 For NPT ports use prefix code "75" for example 75.XXX.XX.XX
 Order coils & connecting plugs separately, see data sheet M1002.

Symbol	Description	Type	Orifice	Ports	Order code
	5/2 way spring return	Poppet	15mm	G1/2	76.067.94.00
	5/2 way double solenoid	Poppet	15mm	G1/2	76.067.95.00

Dimensional drawings



Flow rate orifice 15mm poppet type
 kv=68,80 l/min



Impulse Automation Limited
United Kingdom
Company Registration 665193