

# Air Pilot Operated Pneumatic Valves

## 3/2 Way Single & Double Pilot Control Valve G1/8 Ports

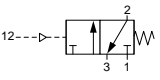
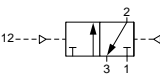
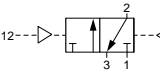
### Technical information

<b>Pressure range:</b>	0-10 bar
<b>Control pressure:</b>	2.5-10 bar
<b>Temperature range:</b>	-15°C...+50°C
<b>Housing:</b>	Die-cast and lacquered zinc alloy
<b>Seals:</b>	NBR
<b>Lubricant:</b>	Not required
<b>Operating medium:</b>	5 micron filtered, lubricated or non-lubricated compressed air

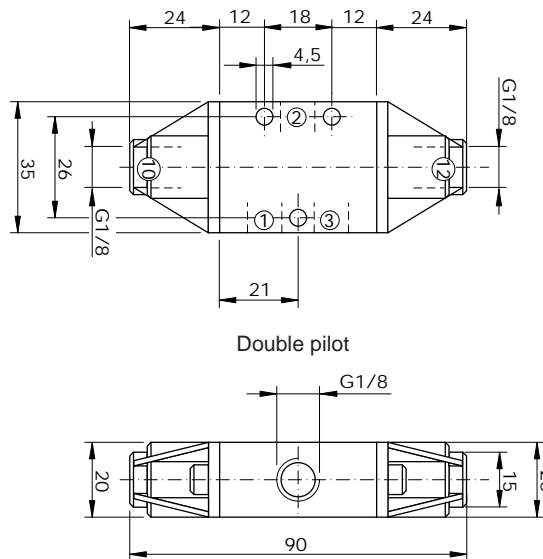
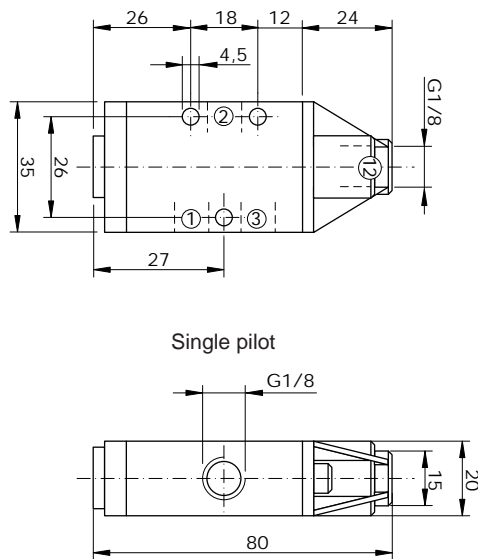


### Other information

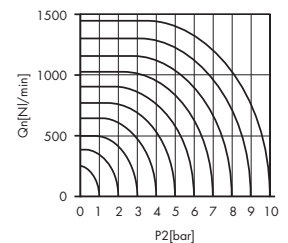
**Ex** For ATEX certification use suffix code "EX" for example 76.XXX.XX.XX.EX  
For NPT ports use prefix code "75" for example 75.XXX.XX.XX

Symbol	Description	Type	Orifice	Pilot Ports	Ports	Order code
	3/2 way normally closed spring return	Spool	6mm	G1/8	G1/8	<b>76.022.71.21</b>
	3/2 way double pilot	Spool	6mm	G1/8	G1/8	<b>76.022.71.22</b>
	3/2 way double pilot with priority	Spool	6mm	G1/8	G1/8	<b>76.022.71.47</b>

### Dimensional drawings



Flow rate orifice 6mm spool type  
kv=9,7 l/min



**Impulse Automation Limited**  
**United Kingdom**  
**Company Registration 665193**