


# Mechanically Operated Pneumatic Valves

## 5/2 Way Roller Lever Valve - Two Way Roller Function

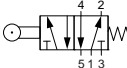
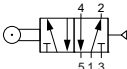
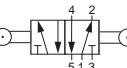
### Technical information

<b>Pressure range:</b>	0-10 bar
<b>Temperature range:</b>	-15°C...+50°C
<b>Housing:</b>	Die-cast and lacquered zinc alloy
<b>Seals:</b>	NBR
<b>Lubricant:</b>	Not required
<b>Operating medium:</b>	5 micron filtered, lubricated or non-lubricated compressed air

### Other information

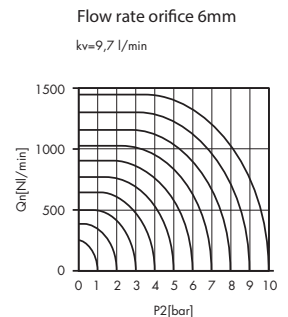
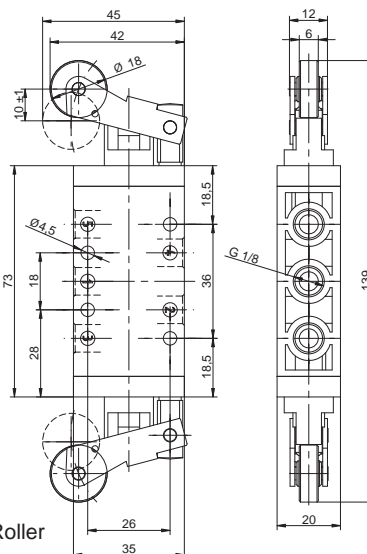
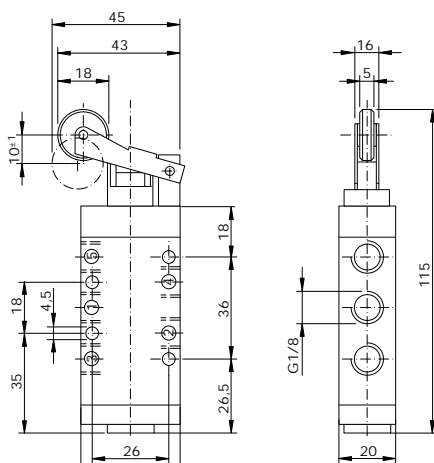
 For ATEX certification use suffix code "EX" for example 76.XXX.XX.XX.EX  
For NPT ports use prefix code "75" for example 75.XXX.XX.XX



Symbol	Description	Type	Orifice	Ports	Order code
	5/2 way spring return	Spool	6mm	G1/8	<b>76.023.23.41</b>
	5/2 way maintained position with pilot return **	Spool	6mm	G1/8	<b>76.023.23.42</b>
	5/2 way with roller on both ends	Spool	6mm	G1/8	<b>76.023.23.10</b>

### Dimensional drawings

\*\*Dimensional drawing upon request



**Impulse Automation Limited**  
**United Kingdom**  
**Company Registration 665193**