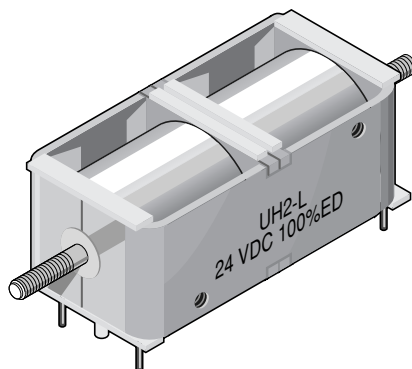


UH2 Series Bi-directional Linear Solenoid

UH	2	- L -	24 V DC	100 % ED	Order specifications
UH					Linear solenoid
	2				Design type
					Coil terminals
		F			Flying leads (10 cm standard length)
		L			Soldering pins
			24		Nominal voltage (standard voltage) ¹⁾
				100 % ED	Perm. duty cycle under air cooled conditions (LK)

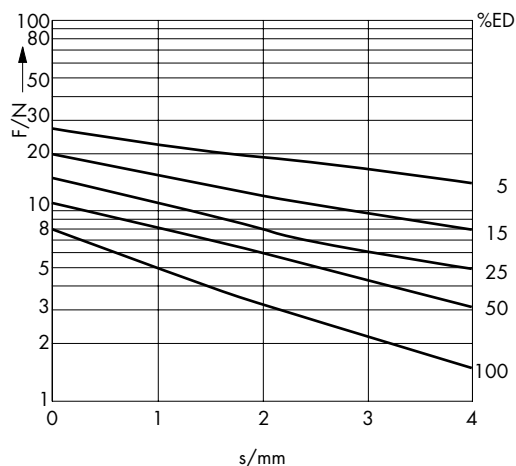
¹⁾ Other DC voltages are available on request.



Weight:
Complete solenoid: appr. 135 g
Armature: appr. 20 g
Standard:
Voltage: 24 V DC
Flying leads: 10 cm
Insulation class: E (max. permissible temperature = 120 °C)

%	100	50	25	15	5	% Perm. duty cycle (ED) ²⁾
W	8,3	16	30	46	115	W Nominal coil power P _n

²⁾ If solenoid is mounted directly onto a flat metal surface of at least 160 cm², the duty cycle can be extended up to 1.3 x nominal rating



Force vs. Stroke diagram $F = f(s)$

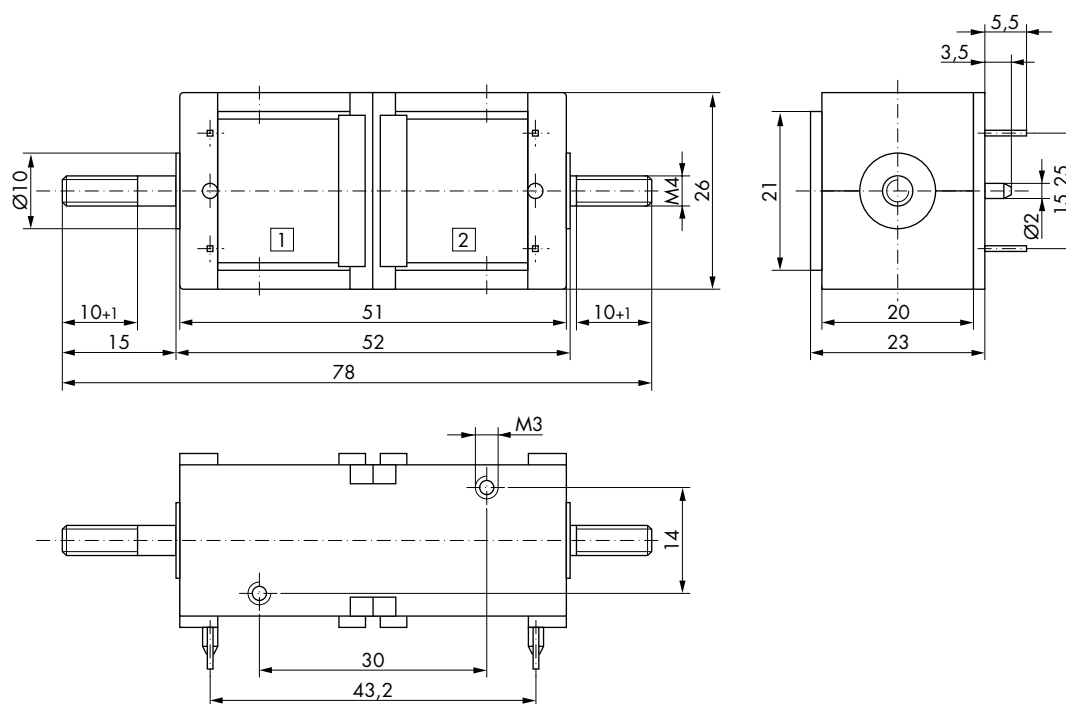
Force measured when operating in horizontal position, at 90 % rated voltage and with winding at operating temperature

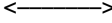
stroke $s = 0$ corresponds to armature in fully home position

Impulse Automation Limited
United Kingdom
Company Registration 665193

Information shown in these data sheets are for guidance purposes only, no liability is accepted for any errors or omissions. The designer or user is solely responsible for the safe and proper use of these parts, assemblies or equipment described.

UH2 Series Bi-directional Linear Solenoid



Dimensions given when
system 1 current-carrying

 Direction of stroke