

# ISO 15552 Pneumatic Cylinder

## Double Acting Ø 125mm - 320mm

### Technical information

**Operating pressure:** Max. 10 bar  
**Temperature range:** -10°C...+80°C (Dry air for below 0°C)  
**Housing/end caps:** Aluminium  
**Rod:** C45 chromium plated steel (Optional stainless steel)  
**Seals:** NBR (Optional Viton -10°C...+150°C)  
**Lubricant:** Not required  
**Operating medium:** 5 micron filtered, lubricated or non-lubricated compressed air.



### Other information:

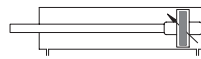
Sensors (up to Ø 200mm) & seal kits are available for this product, see data sheet M8404.  
 Mountings are available for Ø 125 - 200mm only, see data sheets M8405/M8406/M8407.

Ø	A	B	C	D	ØE	F	G	H	I	ØJ	K	L	M	N	O	P	Q	ØR	S
125	140	52	40	5	60	110	22	M12	26	32	25	27	M27x2	54	160	225	G1/2	27	93
160	180	60	35	5	65	140	27	M16	28.5	40	45	36	M36x2	72	180	260	G3/4	35	102
200	220	59	35	5	75	175	27	M16	23.5	40	60	36	M36x2	72	180	275	G3/4	35	104
250	280	60	50	5	90	220	38	M20	30	50	25	46	M42x2	85	230	305	G3/4	35	149
320	340	60	82	5	110	270	46	M24	30	63	28	55	M48x2	96	230	340	G1	-	149

### Dimensional drawings & ordering information

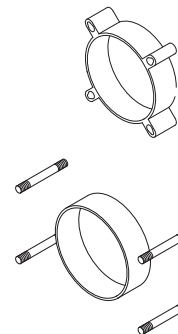
#### To order:

**VF.125.XXXX.DOM** 125mm bore + stroke  
**VF.160.XXXX.DOM** 160mm bore + stroke  
**VF.200.XXXX.DOM** 200mm bore + stroke  
**VF.250.XXXX.DOM** 250mm bore + stroke  
**VF.320.XXXX.DOM** 320mm bore + stroke



#### Length of cushioning:

Ø 125 35mm  
 Ø 160 45mm  
 Ø 200 45mm  
 Ø 250 50mm  
 Ø 320 50mm



Ø 125/160/200mm  
 internal tie-rod  
 tube profile.

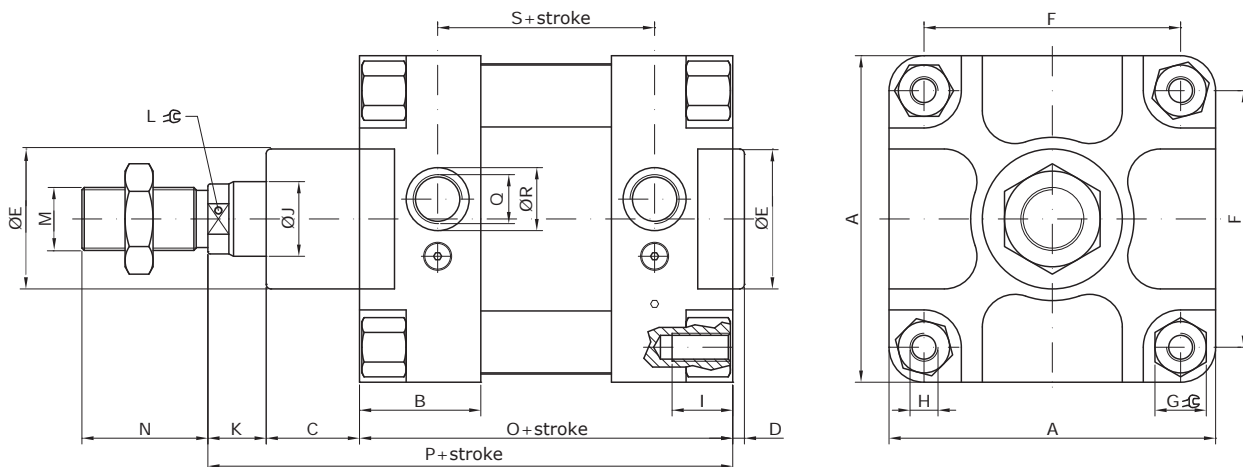
Ø 250/320mm  
 external tie-rod  
 tube profile.

Stainless steel piston rod is also available for example: VF.XXX.XXXX.DOM.4

Viton\*\* seals are also available for example: VF.XXX.XXXX.DOM.8

\*\* Ø 125/160/200mm only, a maximum temperature limitation of 100 C for the magnet to be effective when sensors are being used.

Non-magnetic versions are also available for example: VD.XXX.XXXX.DOM



**Impulse Automation Limited**  
**United Kingdom**  
**Company Registration 665193**