

Profile Pneumatic Cylinder

Double Acting Tandem \varnothing 125mm - 200mm

Technical information

Operating pressure:	Max. 10 bar
Temperature range:	-10°C...+80°C (Dry air for below 0°C)
Housing/end caps:	Aluminium
Rod:	C45 chromium plated steel (Optional stainless steel)
Seals:	NBR (Optional Viton -10°C...+150°C)
Lubricant:	Not required
Operating medium:	5 micron filtered, lubricated or non-lubricated compressed air.



The picture above is an indication of design only.
See dimensional drawings.

Other information:

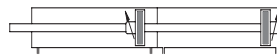
Sensors & seal kits are available for this product, see data sheet M8404.
 Mountings are available for this product, see data sheets M8405/M8406/M8407.

\varnothing	A	B	C	D	$\varnothing E$	F	G	H	I	$\varnothing J$	K	L	M	N	O	P	Q	$\varnothing R$
125	140	52	40	5	60	110	22	M12	26	32	25	27	M27x2	54	251	316	G 1/2	27.5
160	180	60	35	5	65	140	27	M16	28.5	40	45	36	M36x2	72	282	362	G 3/4	35
200	220	59	35	5	75	175	27	M16	23.5	40	60	36	M36x2	72	284	379	G 3/4	35

Dimensional drawings & ordering information

To order:

VF.125.XXXX.DOM.2	125mm bore + stroke
VF.160.XXXX.DOM.2	160mm bore + stroke
VF.200.XXXX.DOM.2	200mm bore + stroke



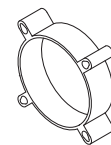
Length of cushioning:

\varnothing 125	35mm
\varnothing 160	45mm
\varnothing 200	45mm

Non-magnetic versions are also available for example: **VD.XXX.XXXX.DOM.2**

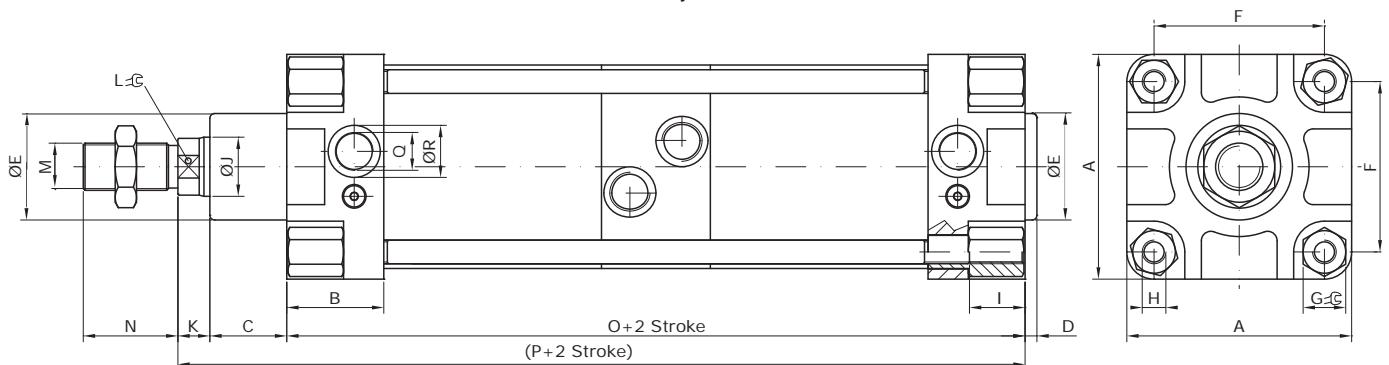
Stainless steel piston rod and/or Viton** seals are also available, for these versions a special project code will be generated by our factory.

** A maximum temperature limitation of 100 C for the magnet to be effective when sensors are being used.



Cylinder tube profile

A single rod passing through both cylinders to increase force, for this reason both cylinder strokes have to be exactly the same.



Impulse Automation Limited
United Kingdom
Company Registration 665193

Information shown in these data sheets are for guidance purposes only, no liability is accepted for any errors or omissions.
 The designer or user is solely responsible for the safe and proper use of these parts, assemblies or equipment described.