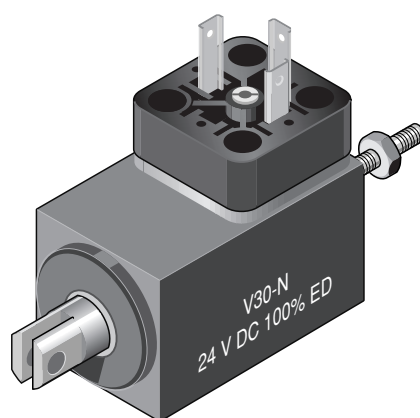


V30 Series Linear Solenoid Push & Pull Type

V	30	- N -	24 V DC	100 % ED	Order specifications
V					Linear solenoid
	30				Design type
					Coil terminals
		F			Flying leads (10 cm standard length)
		N			Plug ¹⁾
			24		Nominal voltage (standard voltage) ²⁾
				100 % ED	Perm. duty cycle under air cooled conditions (LK)

¹⁾ Suits plug-in socket 6.3 DIN 46247

²⁾ Other voltages are available on request up to 230 V DC



Weight:

Complete solenoid: appr. 285 g
Armature: appr. 28 g

Standard:

Voltage: 24 V DC
Flying leads: 10 cm
Insulation class: E (max. permissible temperature = 120 °C)

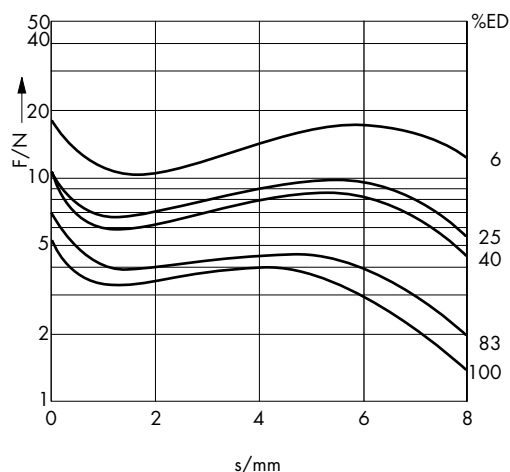
Accessories: Plug-in socket part no. Z801 and Z811

Metal case

Terminal box: 6.3 DIN 46247

	100	85	40	25	6	% Perm. duty cycle (ED) ³⁾
	9,2	11	21	33	128	W Nominal coil power P _n

³⁾ If solenoid is mounted directly onto a flat metal surface of at least 300 cm², the duty cycle can be extended up to 1.3 x nominal rating



Force vs. Stroke diagram $F = f(s)$

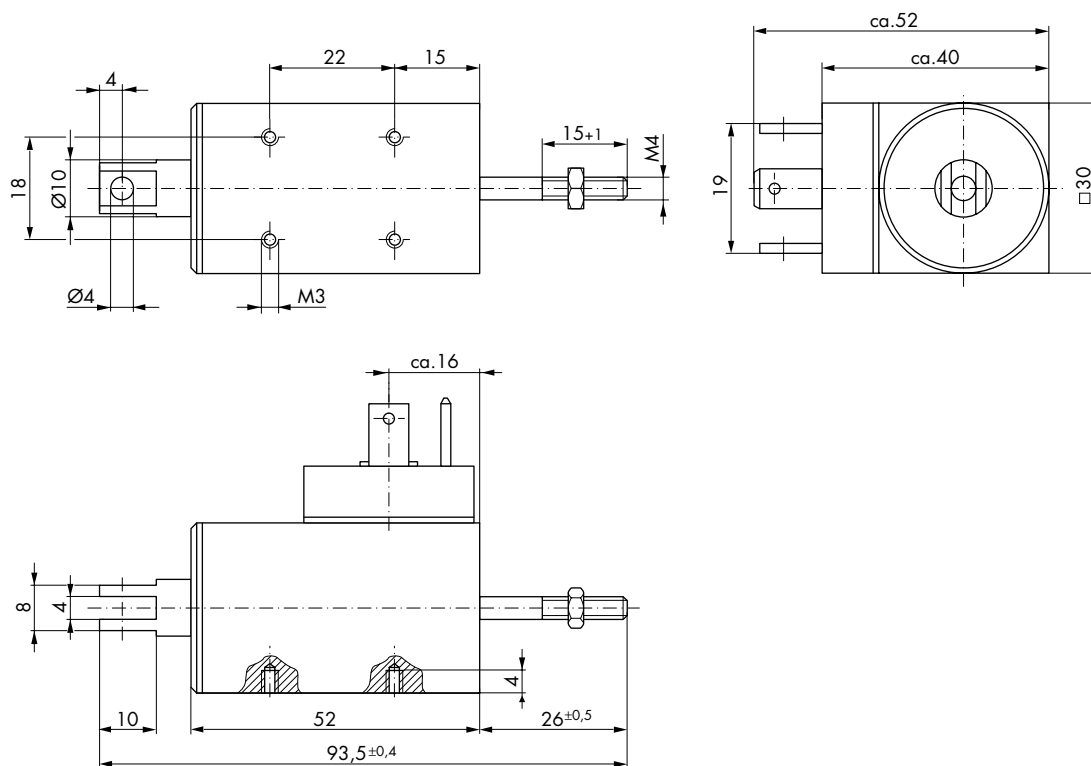
Force measured when operating in horizontal position, at 90 % rated voltage and with winding at operating temperature

stroke $s = 0$ corresponds to armature in fully home position

Impulse Automation Limited
United Kingdom
Company Registration 665193

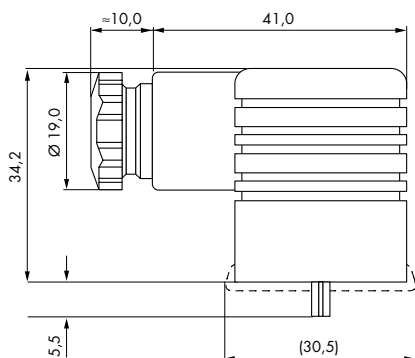
Information shown in these data sheets are for guidance purposes only, no liability is accepted for any errors or omissions. The designer or user is solely responsible for the safe and proper use of these parts, assemblies or equipment described.

V30 Series Linear Solenoid Push & Pull Type



Dimensions given with armature in fully home position

→
Direction of stroke



Plug-in socket Z801

Screw joint PG 9
for lead diameter 4.5 - 7 mm

Plug-in socket Z811

Screw joint PG 11
for lead diameter 6 - 9 mm
Plug-in socket with built in
Si-bridge rectifier



Impulse Automation Limited
United Kingdom
Company Registration 665193

Information shown in these data sheets are for guidance purposes only, no liability is accepted for any errors or omissions.
The designer or user is solely responsible for the safe and proper use of these parts, assemblies or equipment described.