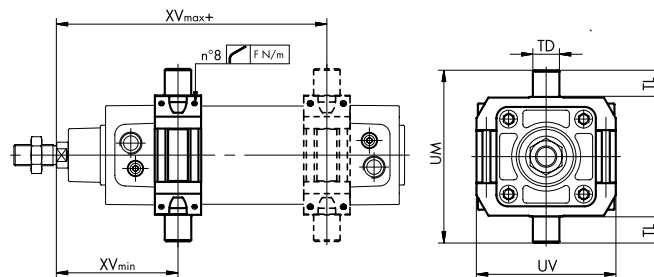


Cleanline Cylinder Mountings

Swivel Bearing

Code	∅	TD e ⁹	TL h ¹⁴	UM	UV	XV _{min}	XV _{max+}	F [N/m]
21.1R.07	32	12	12	74	65	66.5	79.5	2
21.2R.07	40	16	16	95	75	71	94	2
21.3R.07	50	16	16	107	85	80	100	2.5
21.4R.07	63	20	20	130	105	91.5	103.5	2.5
21.5R.07	80	20	20	150	130	101	118.5	5
21.6R.07	100	25	25	182	145	113.5	126.5	5

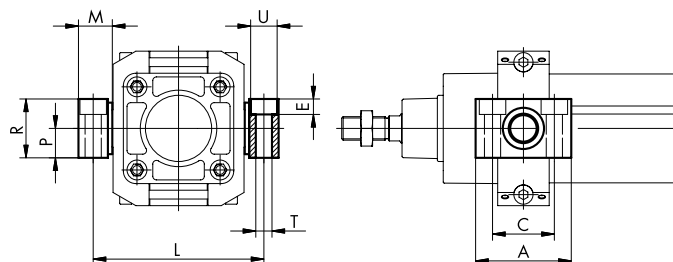
Adjustable positioning.



Swivel Bearing Supports

Code	∅	A	C	P	R	M	L	∅T	∅U	E
20.007.11	32	46	32	15	30	18	71	7	11	6.5
20.007.12	40	55	36	18	36	21	87	9	15	8.5
20.007.12	50	55	36	18	36	21	99	9	15	9.5
20.007.14	63	65	42	20	40	23	116	11	18	10.5
20.007.14	80	65	42	20	40	23	136	11	18	10.5
20.007.16	100	75	50	25	14	28.5	164	13	20	12.5

Two pieces supplied per order.



Impulse Automation Limited
United Kingdom
Company Registration 665193