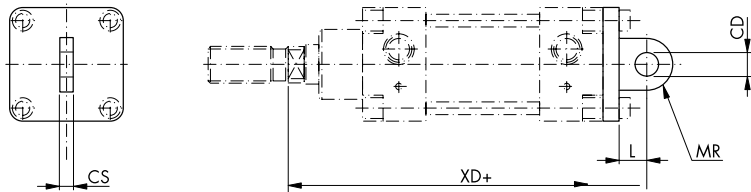


CNOMO Cylinder Mountings

Male Trunnion

Code	∅	CS	CD	L	MR	XD
16.002.01	32	26	10	12	10	125
16.002.02	40	28	12	15	12	167
16.002.03	50	32	12	17	12	171
16.002.04	63	40	16	20	16	194
16.002.05	80	50	16	20	16	196
16.002.06	100	60	20	25	20	229

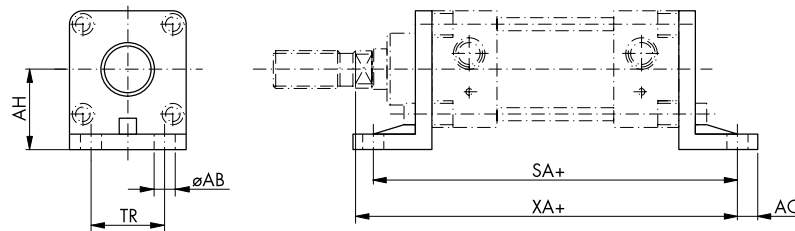
Includes fixing bolts.
 Not for use with through rod version cylinders.



Mounting Bracket

Code	∅	AH	TR	AB	AO	SA	XA
16.005.01	32	32	28	9	8	134	132
16.005.02	40	36	36	9	8	164	171
16.005.03	50	45	45	11	8	180	179
16.005.04	63	50	55	11	10	195	199
16.005.05	80	63	70	14	12	211	207
16.005.06	100	73	90	14	12	231	235

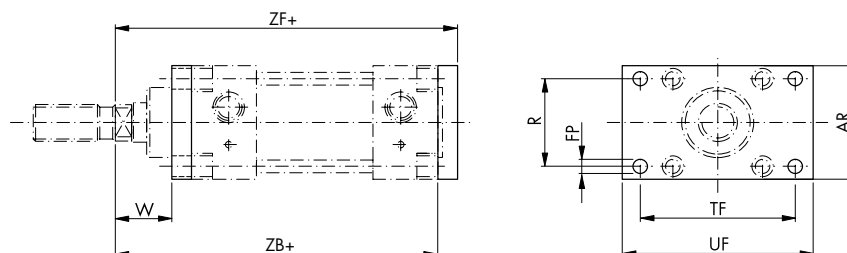
Includes fixing bolts
 (One bracket supplied).



Mounting Plate

Code	∅	W	R	FP	TF	UF	AR	ZF	ZB
16.006.01	32	17	33	9	68	80	45	113	105
16.006.02	40	26	40	9	78	90	52	152	144
16.006.03	50	24	49	1	94	110	65	154	144
16.006.04	63	29	59	1	104	120	75	174	164
16.006.05	80	27	75	14	130	150	95	176	164
16.006.06	100	39	90	14	150	170	115	204	192

Includes fixing bolts
 (One plate supplied).



Impulse Automation Limited
United Kingdom
Company Registration 665193

Information shown in these data sheets are for guidance purposes only, no liability is accepted for any errors or omissions. The designer or user is solely responsible for the safe and proper use of these parts, assemblies or equipment described.