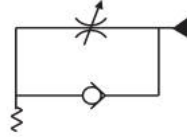


Pneumatic Fittings

Orienting Flow Regulator - Parallel Thread For Pneumatic Valves



Technical information

Pressure range: -0.99 to 20 bar
Temperature range: -20°C...+80°C
Material: Nickel plated brass body, black acetalic resin collet
Seals: NBR
Operating medium: 5 micron filtered, lubricated or non-lubricated compressed air. Minimum order quantities may apply, please ask for further information.
Other information:



Tube Size	Thread	Order code
3	M5	50910N-03-05
4	M5	50910N-04-05
4	1/8	50910N-04-10
5	M5	50910N-05-05
5	1/8	50910N-05-10
5	1/4	50910N-05-13
6	M5	50910N-06-05
6	1/8	50910N-06-10
6	1/4	50910N-06-13
8	1/8	50910N-08-10
8	1/4	50910N-08-13
8	3/8	50910N-08-17
10	1/4	50910N-10-13
10	3/8	50910N-10-17
12	3/8	50910N-12-17
12	1/2	50910N-12-21
14	1/2	50910N-14-21

Impulse Automation Limited
United Kingdom
Company Registration 665193