

# Pneumatic Air Preparation

## Filter G1/2 & G1 Ports

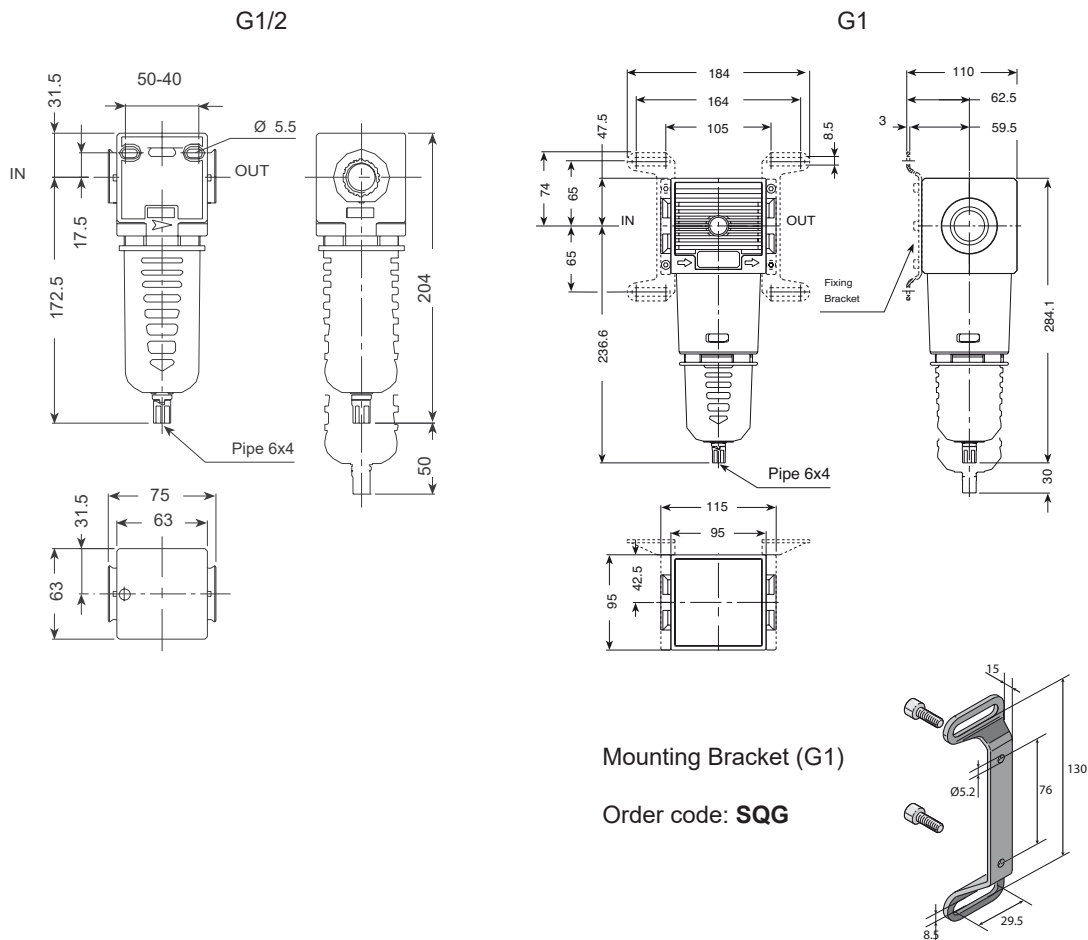
### Technical information

|                                 |   |
|---------------------------------|---|
| <b>Max. pressure:</b>           | 12.5 bar  |
| <b>Filtration grade:</b>        | 20 µm   |
| <b>Temperature range:</b>       | 5 to 55°C   |
| <b>Flow rate (P = 6.3 bar):</b> | G1/2 ports 2300 NI/min / G1 ports 11250 NI/min        |
| <b>Condensate cup capacity:</b> | G1/2 ports 100 cc / G1 ports 200 cc                   |
| <b>Drainage type:</b>           | Manual / Semi Automatic drain                         |
| <b>Material:</b>                | Transparent toughened Polyamide bowl with outer guard |



| Description       | Ports | Order code |
|-------------------|-------|------------|
| Filter G1/2 ports | G1/2  | F2STP      |
| Filter G1 ports   | G1    | F10STP     |

### Dimensional drawings



**Impulse Automation Limited**  
**United Kingdom**  
**Company Registration 665193**