

# Pneumatic Air Preparation

## Filter Regulator G1/4 & G3/8 Ports

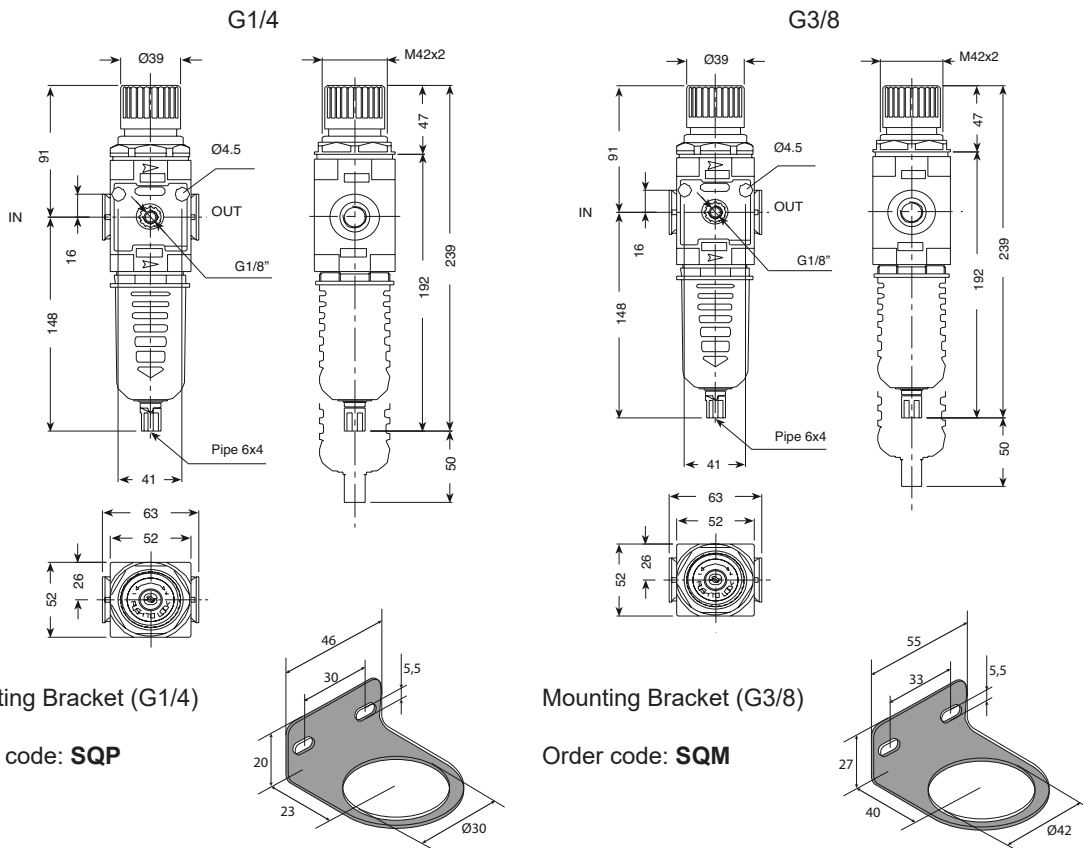
### Technical information

**Max. pressure:** 12.5 bar  
**Regulation range:** 0 to 8 bar  
**Filtration grade:** 20 µm  
**Temperature range:** 5 to 55°C  
**Flow rate (P = 6.3 bar):** G1/4 ports 850 NI/min / G3/8 ports 1500 NI/min  
**Condensate cup capacity:** G1/4 ports 22 cc / G3/8 ports 42 cc  
**Drainage type:** Manual / Semi Automatic drain  
**Material:** Transparent toughened Polyamide bowl with outer guard



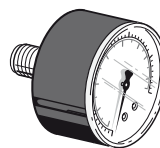
Description	Ports	Order code
Filter regulator G1/4 ports	G1/4	FR4STP
Filter regulator G3/8 ports	G3/8	FR3STP

### Dimensional drawings



0 to 12 Bar Pressure Gauge

40mm Ø Order code: **M4P812W**  
 50mm Ø Order code: **M5P812W**



**Impulse Automation Limited**  
**United Kingdom**  
**Company Registration 665193**