

# Pneumatic Air Preparation

## Filter Regulator G1/2 & G1 Ports

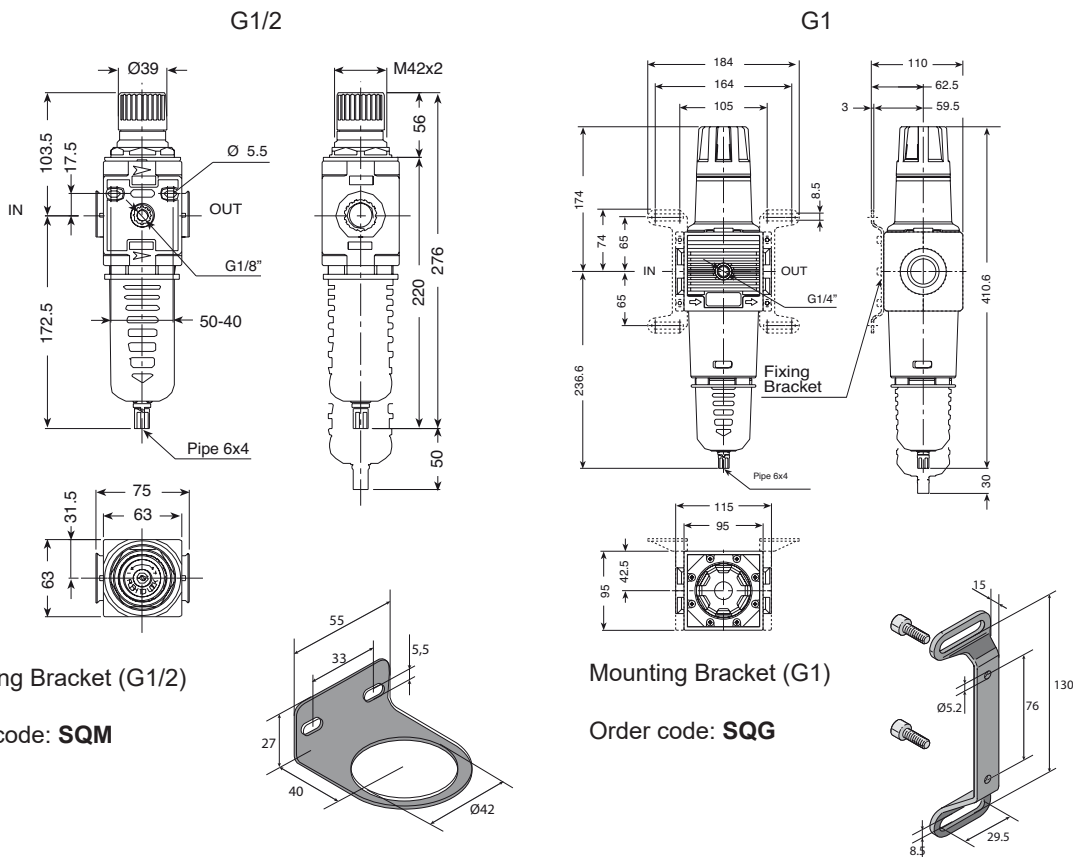
### Technical information

**Max. pressure:** 12.5 bar  
**Regulation range:** 0 to 8 bar  
**Filtration grade:** 20 µm  
**Temperature range:** 5 to 55°C  
**Flow rate (P = 6.3 bar):** G1/2 ports 2300 NI/min / G1 ports 13800 NI/min  
**Condensate cup capacity:** G1/2 ports 100 cc / G1 ports 200 cc  
**Drainage type:** Manual / Semi Automatic drain  
**Material:** Transparent toughened Polyamide bowl with outer guard



Description	Ports	Order code
Filter regulator G1/2 ports	G1/2	FR2STP
Filter regulator G1 ports	G1	FR10STP

### Dimensional drawings



Mounting Bracket (G1/2)

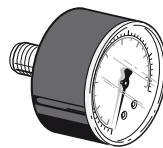
Order code: **SQM**

Mounting Bracket (G1)

Order code: **SQG**

### 0 to 12 Bar Pressure Gauge

40mm Ø Order code: **M4P812W** [G1/2 ported model]  
 50mm Ø Order code: **M5P812W** [G1/2 ported model]  
 63mm Ø Order code: **M6P412W** [G1 ported model]



**Impulse Automation Limited**  
**United Kingdom**  
**Company Registration 665193**