

Pneumatic Air Preparation

Filter Regulator + Lubricator

Technical information

Max. pressure:	12.5 bar
Regulation range:	0 to 8 bar
Filtration grade:	20 µm
Temperature range:	5 to 55°C
Flow rate (P = 6.3 bar):	G1/4 ports 850 NI/min G3/8 ports 1500 NI/min G1/2 ports 2300 NI/min G1 ports 12000 NI/min
Condensate cup capacity:	G1/4 ports 22 cc G3/8 ports 42 cc G1/2 ports 100 cc G1 ports 200 cc
Drainage type:	Manual / Semi Automatic drain
Material:	Transparent toughened Polyamide bowl with outer guard

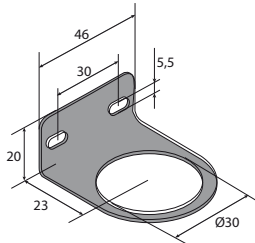


Description	Ports	Order code
Filter regulator + lubricator G1/4 ports	G1/4	FRL42STP
Filter regulator + lubricator G3/8 ports	G3/8	FRL32STP
Filter regulator + lubricator G1/2 ports	G1/2	FRL22STP
Filter regulator + lubricator G1 ports	G1	FRL102STP

Accessories

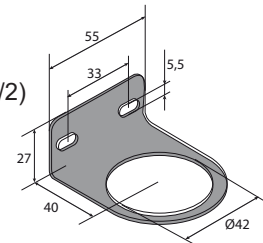
Mounting Bracket (G1/4)

Order code: **SQP**



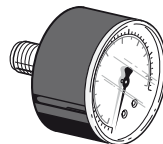
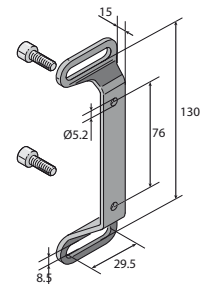
Mounting Bracket (G3/8 & G1/2)

Order code: **SQM**



Mounting Bracket (G1)

Order code: **SQG**



0 to 12 Bar Pressure Gauge

- 40mm Ø Order code: **M4P812W** [G1/4, G3/8, G1/2 ported models]
- 50mm Ø Order code: **M5P812W** [G1/4, G3/8, G1/2 ported models]
- 63mm Ø Order code: **M6P412W** [G1 ported model only]

Impulse Automation Limited
United Kingdom
Company Registration 665193