

# Pneumatic Air Preparation

## Pressure Regulator G1/2 & G1 Ports

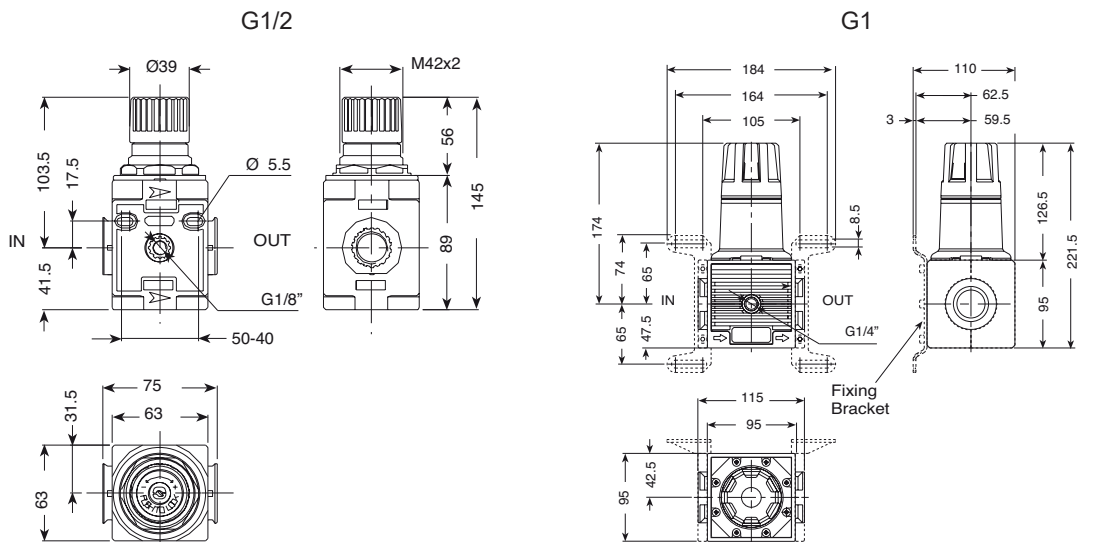
### Technical information

**Max. pressure:** 12.5 bar  
**Regulation Range:** 0 to 8 bar  
**Temperature range:** 5 to 55°C  
**Flow rate (P = 6.3 bar):** G1/2 ports 2300 NI/min / G1 ports 15000 NI/min  
**Material:** Polyamide



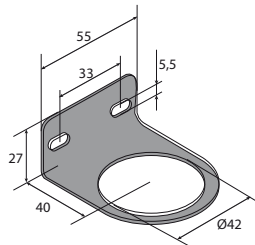
Description	Ports	Order code
Pressure regulator G1/2 ports	G1/2	R2ST
Pressure regulator G1 ports	G1	R10ST

### Dimensional drawings



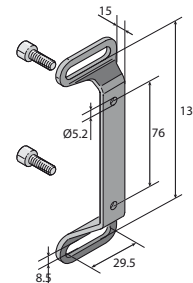
Mounting Bracket (G1/2)

Order code: **SQM**



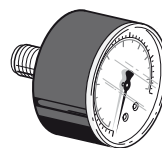
Mounting Bracket (G1)

Order code: **SQG**



### 0 to 12 Bar Pressure Gauge

40mm Ø Order code: **M4P812W** [G1/2 ported model]  
 50mm Ø Order code: **M5P812W** [G1/2 ported model]  
 63mm Ø Order code: **M6P412W** [G1 ported model]



**Impulse Automation Limited**  
**United Kingdom**  
**Company Registration 665193**