

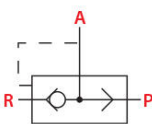
# Logic Valves & Flow Control

## Quick Exhaust Valve / Stainless Steel

### Technical information

<b>Pressure range:</b>	2-10 bar
<b>Temperature range:</b>	G1/8 & G1/4 -10°C...+120°C G3/8 & G1/2 -20°C...+80°C
<b>Housing material:</b>	Stainless steel 316L (1.4404)
<b>Seals:</b>	G1/8 & G1/4 FKM G3/8 & G1/2 PU
<b>Operating medium:</b>	5 micron filtered, lubricated or non-lubricated compressed air.
<b>Other information:</b>	Minimum order quantities may apply, please ask for further information.



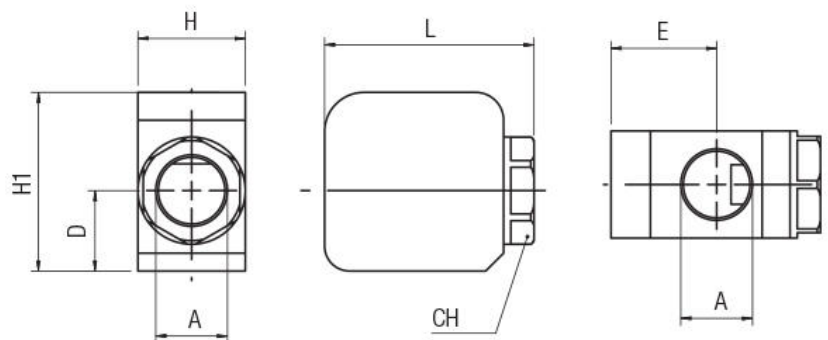
Symbol	Description	A	H	L	H1	E	D	CH	Order code
	Quick exhaust valve G1/8	G1/8	20	40	33	23.5	13.5	18	<b>66050-18-00</b>
	Quick exhaust valve G1/4	G1/4	20	40	33	23	13.5	18	<b>66050-14-00</b>
	Quick exhaust valve G3/8	G3/8	24	50	43	24	20	21	<b>66050-38-00</b>
	Quick exhaust valve G1/2	G1/2	30	58.5	50	29.5	22.5	27	<b>66050-12-00</b>

### Dimensional drawings

### Flow rates

A	Pressure	P to A	A to R
G1/8	6 bar	1580 NI/min	1880 NI/min
G1/4	6 bar	1650 NI/min	1900 NI/min
G3/8	6 bar	2350 NI/min	2880 NI/min
G1/2	6 bar	4580 NI/min	6400 NI/min

When the input signal is removed the output exhausts directly to atmosphere.



**Impulse Automation Limited**  
**United Kingdom**  
**Company Registration 665193**