

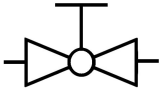
Logic Valves & Flow Control

Shut-Off Ball Valve / Stainless Steel

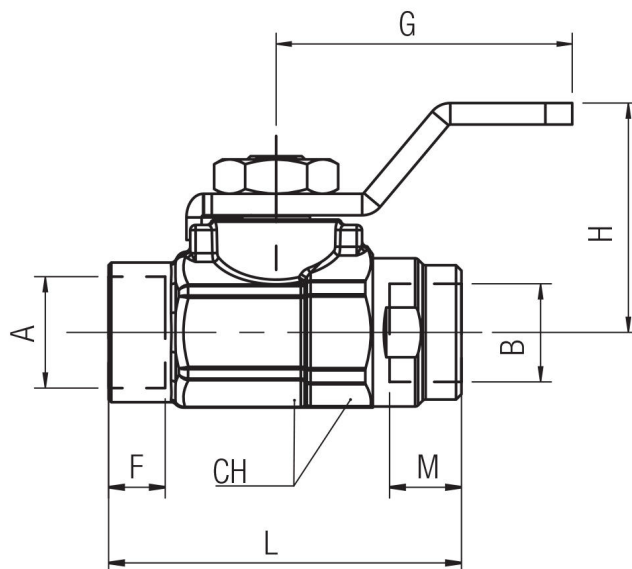
Technical information

Pressure range:	-0.99-40 bar
Temperature range:	-15°C...+150°C
Housing material:	Stainless steel 316L (1.4404)
Seals:	PTFE seats / FKM O-rings
Operating medium:	5 micron filtered, lubricated or non-lubricated compressed air.
Other information:	Minimum order quantities may apply, please ask for further information.



Symbol	Description	A / B	CH	F	M	L	G	H	Order code
	Ball Valve G1/8	G1/8	14-15	8.5	8.5	33	28	21.5	66300-18-00
	Ball Valve G1/4	G1/4	16-17	12.5	12.5	43	28	21.5	66300-14-00

Dimensional drawings



Impulse Automation Limited
United Kingdom
Company Registration 665193